



HAYMON-MORRIS MIDDLE SCHOOL

Our Prototype Middle School for Barrow County Schools was designed as a team effort with the Curriculum Directors for the Middle School as well as Barrow's Facility Management Department.

The two-story front of the building houses the Administration and Classrooms, and the one-story rear houses Kitchen, Cafeteria, and Gym. Sixth grade occupies the lower floor of one wing with Specialty Classrooms such as Art, Special Education, and Technology occupying the lower level of the other wing. Seventh and Eighth Grades are on the upper level in separate wings. The school is designed for growth to the rear or side.

Bus access is from one side of the school along a canopy. Cars access the school in the front, and visitors pass through a split administration area. Kitchen deliveries are at the rear, as is team bus access for the gym.

The first use of this school is on Haymon-Morris Road. This site is challenged with an existing elementary and high school and plenty of rock.

This design will be built a second time in the near future as Russell Middle School. ■



344 West Pike Street, Lawrenceville, Georgia 30045
770-963-8989 Fax: 770-822-9492

Owner: Barrow County B.O.E.
Construction Cost: \$9.6 Million
GSF: 134,319 **Acreage:** 14.2
Cost/SF: \$71.50
Cost Per Classroom: \$168,503
Number of Classrooms: 57
Number of Students: 925
Construction Time: 16 Months

WINDER, GEORGIA

Architectural and Structural Eng.
Lindsay Pope Brayfield & Assoc., Inc.
770-963-8989

Civil Engineering
McFarland-Dyer & Associates
770-932-9640

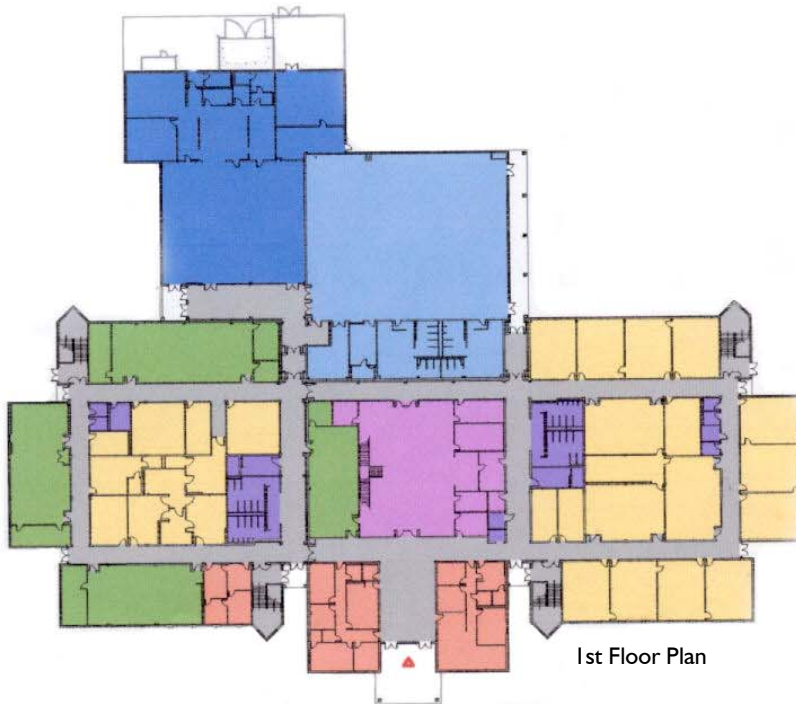
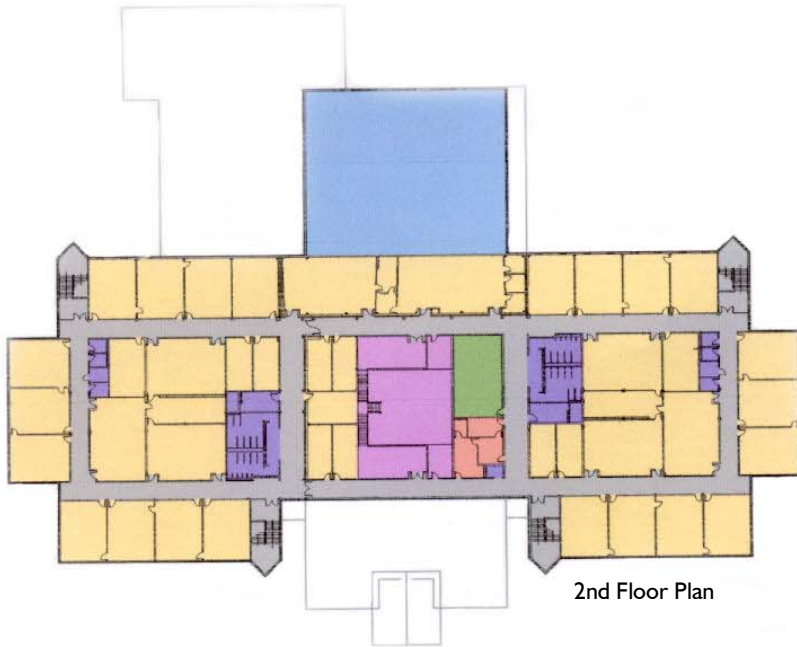
**Mechanical, Electrical and
Fire Protection Engineering**
Spurlock & Associates
404-633-0245

General Contractor
Carroll-Daniel Construction
770-536-3241

**Lindsay • Pope
Brayfield & Assoc.**

www.lpbatlanta.com

HAYMON-MORRIS MIDDLE SCHOOL



Legend:

- | | | |
|---|--|--|
| ■ ADMINISTRATION | ■ CORRIDOR/LORBY/
STAIR | ■ MEDIA CENTER |
| ■ CAFETERIA/
KITCHEN | ■ EXPLORATORY | ■ MECH/ELEC./
TLT./ETC. |
| ■ CLASSROOM | ■ GYM./LOCKERS | |

