



SPRINGHILL SUITES, BUCKHEAD

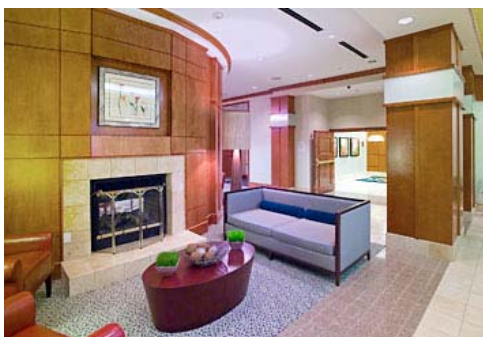
This property is located on Buckhead Loop, in the middle of the trendy Buckhead section of Atlanta, on a .76 acre site. Because of the tight site and high land values, the hotel goes up 11 stories and has 3 levels of underground parking with 138 parking spaces. Constrained by a library of easements and covenants, this property-line-to-property-line building was a most challenging design.

The hotel employs the new SpringHill Suites prototype lobby plan, with a giant oval enclosure surrounding the dining space, but with special refinements responding to market conditions.

The building facades are dressed in banded brick at the lower levels and synthetic stucco above. Accent colors are used to emphasize design elements and features of the building. The arrival area is clad with granite in keeping with the up-scale location. Next to the front canopy, an outside dining patio with a garden and fountain soften the impact of wall-to-wall concrete.

Guestrooms are all suites, each with a separate sleeping area and sitting area, bath and kitchenette. All units have a large study desk, and feature cabinet units with microwave and under-counter refrigerators. Guest baths are located to the exterior of the room, leaving a larger open space for the living and sleeping areas. Ten jacuzzi rooms are provided.

The hotel features a 60-seat dining area for complimentary breakfast and afternoon social use. Sitting areas wrap a two-sided fireplace which separates the main lobby from the dining area. Larger than normal meeting facilities respond to the business character of the market, and a Business Center is available for guests needing computer, copy and fax services. This



property contains an indoor pool and spa for year-round use and an Exercise Room with state-of-the-art equipment. An outside landscaped exterior sundeck with seating wraps the pool area.

The hotel structure is post-tensioned concrete with steel stud framing and roof trusses.

architecture

L

engineering

P

interiors

B

C

ATLANTA, GA

Units
218

Gross Square Foot
190,487

Construction Cost
\$15,050,000

Cost/Square Foot
\$79.01

Cost/Unit
69,037

Gross Square Foot/Unit
874

Acreage
.76

Construction Start
November 2003

Construction Time
12 Months

Contractor
Suit Construction Co.

Owner
North Point Hospitality Group, Inc.

