

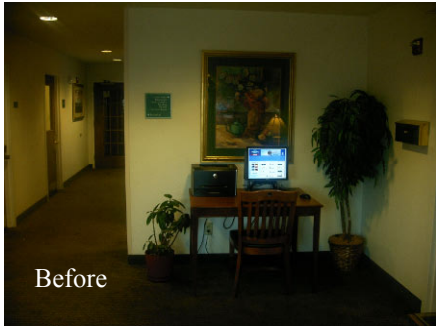


**Lindsay Pope  
Brayfield & Assoc.**

**GREENVILLE, SC**

- Scope of Work**  
Lobby Renovation
- Construction Cost**  
\$100,000 with FF&E (rooms not included)
- Work Started**  
March 2008
- Owner**  
McKibbon Hotel Group
- Management**  
McKibbon Management
- Contractor**  
Timberidge Builders, Inc.
- Purchasing Agent**  
Timberidge Builders, Inc.

**TOWNPLACE SUITES**



The TownePlace Suites Greenville renovation needed radical space and design updates. The prototypical “Up Towne” and “Gen III” décor packages move away from the traditional Lobby / Registration areas toward cleaner, more modern design. It is all about function and simplicity. The new finishes are bright and contemporary. The millwork is now divided into distinct zones with clean, simple lines.

The existing wall and double doors dividing the work and registration areas were removed to create one larger open area. A privacy wall with built-in message cubes was added behind the new “Hello” desk. The walls enclosing the existing business center were also removed to allow the new business center mill work to become a part of the new lobby space. As a part of the brand directions, we added the new “In A Pinch” and “On Us” coffee millwork stations to the lobby. These spaces offer guests multiple “grab and go” food options and 24-hour coffee service. The “Info Perch” gives guests a place to “perch” and read a local publication, or to study the local “Towne Map” that covers the entire wall adjacent to the “Hello” check in desk.



344 West Pike Street, Lawrenceville, Georgia 30046  
770-963-8989 Fax: 770-822-9492

[www.lpbatlanta.com](http://www.lpbatlanta.com)