



COLLINS HILL BRANCH LIBRARY

Positioned on a 4.8 acre site, in an established residential area of Gwinnett County, the challenge of this project was to conceive a 20,000 square foot facility which would not intrude upon the small-scale character of the residential neighborhood. The site was also complicated by a steep slope from the street frontage down to a large flat area, with views toward a neighborhood golf course beyond.

The design evolved around a collection of smaller roof elements, reflecting the individual space uses of the library itself. Six individual roof elements, each with clerestory windows allowing indirect light into the interior, express the feeling of a collection of buildings, rather than a single building. Exterior walls are detailed with split-face masonry veneer with horizontal bands of color.

The circulation lobby allows convenient access to an inside book drop, public toilets and 90-seat conference room. Inside, patrons arrive immediately passing a circulation desk on the right and a periodical reading area on the left. The center axis of the building features the information desk with a clerestory cupola above. Off the information desk, patrons easily circulate to the children's area, browsing area, and the adult collection area. Workroom, offices, and employee areas are positioned behind the circulation desk, with service delivery areas completely concealed from public view.

The interior of the building presents an interesting reflection of the exterior roof masses, with exposed wood beam and wood deck finishes above. Clerestory windows protected by deep overhangs allow indirect day lighting into all areas of the building. Wall surfaces are painted, split-face block for durability and maintenance, and floors are carpeted with an interesting mix of colors and design patterns.

The mechanical systems of the building are split-system fan coil units, zoned to provide control to each of the various function areas of the building. The building is equipped with data/voice cabling systems, capable of supporting technological advances far into the future. Automatic doors, automatic lighting systems and automatic toilet devices are provided for guest convenience and efficiency.

LPB was presented with the first place award in the Architectural Masonry Category by the American Concrete Institute, Georgia Chapter in 1999. ■

architecture

L

engineering

P

interiors

B

C

LAWRENCEVILLE, GA

Owner: Gwinnett County B.O.C.

Volumes: 79,008

Construction Cost: \$2.8 Million

GSF: 20,745

Cost/SF: \$134.00

Construction Start: July 1998

Construction Time: 12 Months

Civil Engineering:

McFarland-Dyer & Associates

Mechanical Engineering:

Matheson Ball Engineering

Interior Design:

The Presnell Group



architecture **L**

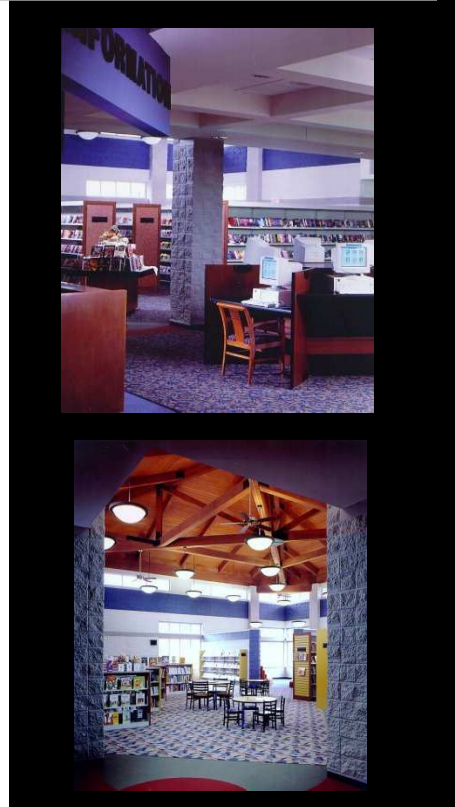
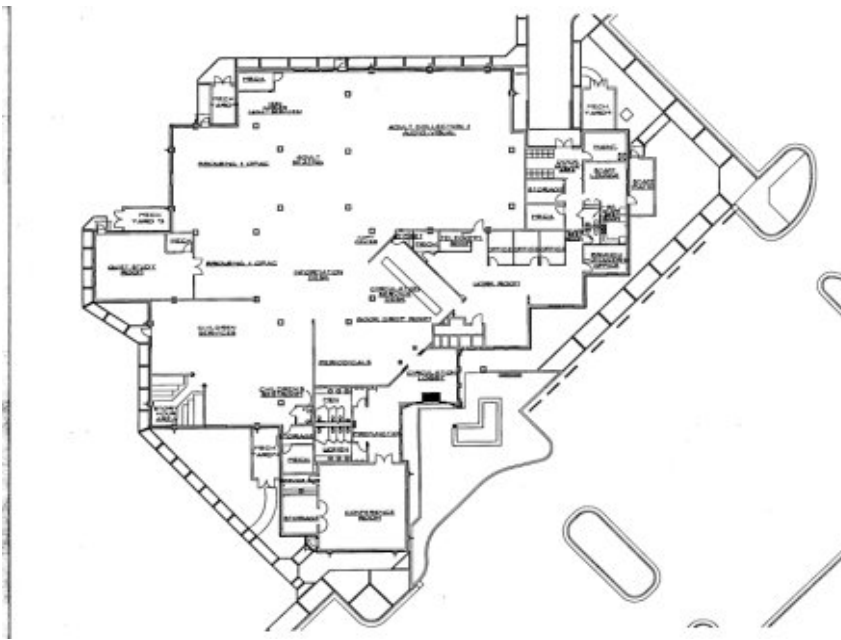
engineering **P**

interiors **B**

C

COLLINS HILL BRANCH LIBRARY

LAWRENCEVILLE, GA



Alternate Views and Floor Plan

