



SUWANEE LIBRARY

Positioned on a 7.5 acre site in the city of Suwanee Georgia, the challenge of this project was to conceive a 20,00 square foot facility the would augment the historic downtown Suwanee main street area and also provide a focus for the new Suwanee Master Plan. The site was also complicated by existing wetlands and bad soils.

The design evolved around the concept of a public meeting place for the community. The entrance is marked by a plaza area and stairs that create details and cast stone medallions that recall historic details of Suwanee in its heyday. Standing seam metal roof and dark storefront framing members also reflect details of the period.

The interior is organized around a central diagonal axis that library functions branch off. The axis has a higher roof which allows for clerestory windows to bring natural light into the interior of the building and is designed to resemble an exterior street with structural columns doubling as street lights and decorative metal trusses reminiscent of old town pavilions . Exterior materials are at signature areas to continue the building theme. The children's story hour incorporates a clock tower as part of the town square and the quiet study is enclosed with brick veneer walls and "antique" doors and windows. Decorative cast iron street lights accent areas throughout.

Patrons can easily circulate the collection areas from the main axis and the information desk is located at the center of the axis for user convenience and also allows library personnel to monitor all public areas. Other user convenience items include a coffee counter, express check and self checkout stations, wireless access and automatic doors. All restroom fixtures are automated including soap and paper towel dispensers.

The lighting system takes advantage of new indirect lighting technology that will provide even illumination without a glare. The mechanical systems are a combination of roof top and fan coil units zoned to provide local control of the various function areas of the building. The building is equipped with data/voice cabling systems that will support future technological advances and also incorporates wireless nodes.

■

architecture

L

engineering

P

interiors

B

C

SUWANEE, GA

Owner: Gwinnett County Board of Education

Acreage: 7.5

Construction Cost: \$3.1 Million

GSF: 20,477

Cost/SF: \$151.39

Construction Start: August 2003

Construction Time: 12 Months

Civil Engineering:

McFarland-Dyer & Associates

Mechanical Engineering:

Matheson Ball Engineering



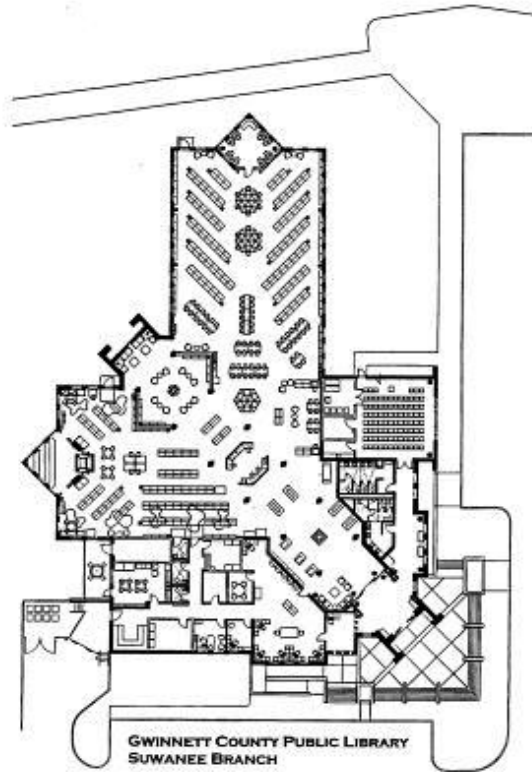
MUNICIPAL



SUWANEE LIBRARY

SUWANEE, GA

architecture	L
engineering	P
interiors	B
	C



Interior Views

