



ATHENS FIRE STATION NO. 3

This fire station is located at the Five Points intersection in Athens. It is a corner site with all sides exposed to public view. The task was to design a station that first met the needs of the Fire Department but that would also create a new community focal point at this major crossroads. The building is designed in a traditional style that recalls turn of the century urban fire stations. A clock tower is sited at the corner and marks the main public entrance to the building as well as creates a community landmark. Exterior materials include two brick colors, cast stone, standing seam metal roof, metal roof tiles and operable aluminum windows. The stations footprint follows the asymmetrical lines of the street and creates a dynamic massing to the building that allows it to appear as a collection of storefronts around the corner. The site design includes wide sidewalks and plaza areas with low site walls to help create outdoor community gathering areas. Parking is provided for 26 vehicles and storm water is collected in both an open detention pond and a below ground storage facility.

The interior program includes a community meeting room, day room, dining area, kitchen, toilets, showers, fitness room, offices, bunk area, apparatus bay, shop, gear room, laundry and cascade facility. The interior stair includes a ceremonial pole. A slide provides quick access for the firemen from the upstairs bunk room to the apparatus bay. The structure is a steel frame with a combination of CMU and gypsum board on metal stud walls. Ground floor is a slab on grade and the upper floor is a composite concrete deck. The roof is a combination of flat and sloped surfaces with metal deck supported by bar joist. Roof materials are standing seam at sloped areas and EPDM at the flat roofs. Mechanical systems consist of split system fan coil units with gas fired heaters and ground mounted compressors. The apparatus bay and gear areas are heated with ceiling hung gas fired furnaces and the bay is ventilated with an interlocked supply/intake fan system. The bay also has an exhaust ventilation system where exhaust hoses are connected directly to the vehicle exhaust and detach when the trucks pull out of the bay. Power systems are supported by a natural gas standby electric generator. Communication, traffic signals and power systems are connected and controlled by the MOSCAD system that allows vital station functions to be controlled from the departments central control facility. The intersections complicated signal system was updated

architecture

L

engineering

P

interiors

B

C

ATHENS, GA

Owner: Athens-Clarke County

Acreage: 1.5

Construction Cost: \$2.1 Million

GSF: 13,613

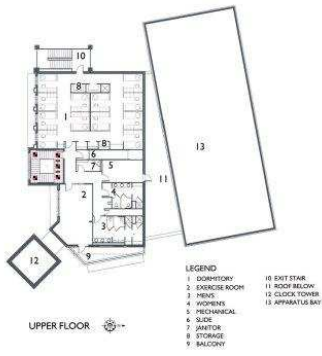
Cost/SF: \$154.00

Construction Start: September 2002

Construction Time: December 2003



MUNICIPAL



ATHENS FIRE STATION NO. 3

ATHENS, GA

architecture	L P B C
engineering	
interiors	



Alternate Views

