



FIRE STATION NO. 12, TAG OFFICE

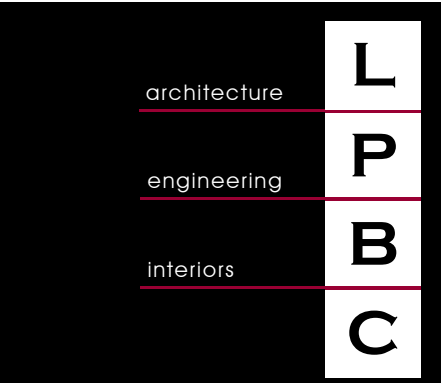
This complex required the integration of three separate Gwinnett County agencies onto one site. These consisted of a 12,800 square foot Fire Station, a 4,300 square foot Tag Office and a Fueling Station for County vehicles. The site is surrounded by residential development at the sides and rear with Lenora Church Road at the front. Site circulation requirements included integrating the fire vehicle access points and a potential 100 county vehicles using the Fuel Station each day as well as a heavy traffic load for the tag office. A main drive bisects the site leading to the fuel station in the rear. The Fire Department required twenty parking spaces for personnel and five visitor spaces. The fuel tank storage and vehicular loop for the fuel station are at the rear of the site and do not conflict with fire service or tag traffic.

The company facility includes a Day Room, Dining Area with Kitchen and enclosed patio, toilets and showers, a Fitness Room, and a bunk area with eleven private cubicles.

The structure for the building includes a slab-on-grade with 8" thickened floors sloped to trench drains in the Apparatus Room. The super structure is a conventional steel structure with a bar joist roof system. All partition walls in the building are painted concrete block, with a complete exterior brick veneer and standing-seam metal roof.

Mechanical systems are provided through four split-system, fan coil units, with gas-fired furnaces and ground-mounted compressor units. The Apparatus Room in the Fire Station is heated with ceiling hung gas-fired furnaces and ventilated with an interlocked supply/intake fan system. A sanitary sewer has been extended off-site to connect with the nearest public sanitary system. The power systems of the building are supported by a generator for emergency power during extended power outages. Radio communication links are provided throughout the building for connection to the County's 911 service and for general alarms at the interior and exterior of the building.

The Tag Office building is comprised of load bearing wood stud walls supporting wood roof trusses. The exterior walls are brick veneer. The interior spaces include a large counter area for customers, offices and an employee break room. Mechanical systems are provided through spit system fan coil units and ground mounted compressor units. Lighting is provided by pendant mounted indirect florescent fixtures. ■



SNELLVILLE, GA

Owner: Gwinnett County

Acreage: 8.45

Construction Cost: \$4.344 Million

GSF: 17,100

Cost/SF: \$140.00

Construction Start: Summer 2005

Construction Time: 16 Months

Architect/Engineering/Interior Design

Lindsay ♦ Pope ♦ Brayfield & Assoc., Inc.

Buck Lindsay and Mike Clifford

Greg Brayfield and Gene Gabrell

Vanessa Burt

770-963-8989

Civil Engineering

McFarland-Dyer & Associates, Inc.

Jeffrey Dyer

770-932-6550

Mechanical Engineering:

Matheson Ball Engineering

Fred Ball

770-751-0773

General Contractor

Swofford Construction

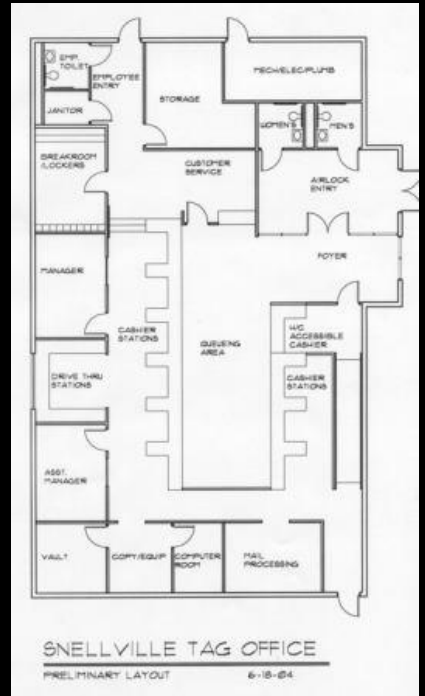
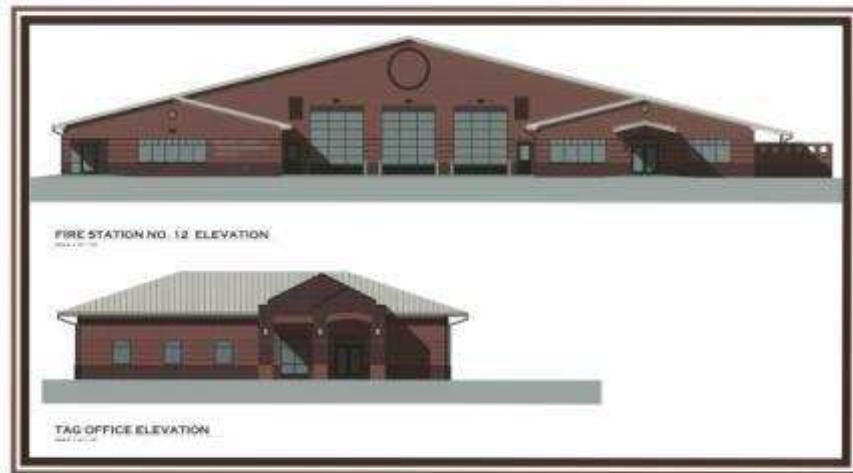
678-645-8988



FIRE STATION NO. 12, TAG OFFICE

architecture	L
engineering	
interiors	
	P
	B
	C

SNELLVILLE, GA



Fire Station and Tag Office elevations (above) Fueling Station (below)

