



FIRE STATION NO. 25

This complex required the integration of two separate Gwinnett County agencies onto one site. These consisted of an 8,648 square foot Fire Station and a Fueling Station for county vehicles. The site is bound by residential development at the rear, Ronald Reagan Parkway on one side and commercial development on the other. Site circulation requirements included integrating the fire vehicle access points and a potential 100 county vehicles using the Fuel Station each day. The Fire Department required twenty parking spaces for personnel and five visitor spaces. The fuel tank storage and vehicular loop for the fuel station are at the rear of the site and do not conflict with fire service traffic.

The company facility includes a Day Room, Dining Area with Kitchen and enclosed patio, toilets and showers, a Fitness Room, and a Bunk Area with eleven private cubicles.

The structure for the Fire Station includes a slab-on-grade with 8" thickened floors sloped to trench drains in the Apparatus Room. The super structure is conventional steel structure with a bar joist roof system. All partition walls in the building are painted concrete block, with a complete exterior brick veneer and standing-seam metal roof.

Mechanical systems are provided through four split-system, fan coil units, with gas-fired furnaces and ground-mounted compressor units. The Apparatus Room in the Fire Station is heated with ceiling hung gas-fired furnaces and ventilated with an interlocked supply/intake fan system. The sanitary sewer has been extended off-site to connect with the nearest public sanitary system. The power systems of the building are supported by a generator for emergency power during extended power outages. Radio communications links are provided throughout the building for connection to the County's 911 service and for general alarms at the interior and exterior of the building. ■



architecture

L

engineering

P

interiors

B

C

LAWRENCEVILLE, GA

Owner: Gwinnett County

Acreage: 6.586

Construction Cost: \$1,119,405

GSF: 8,648

Cost/SF: \$129.44

Construction Start: May 2002

Construction Time: 9 Months

Architect/Engineering/Interior Design

Lindsay ♦ Pope ♦ Brayfield & Assoc., Inc.

Buck Lindsay and Tom Owens

Greg Brayfield and Gene Gabrell

Vanessa Burt

770-963-8989

Civil Engineering

McFarland-Dyer

Jeffrey Dyer

770-932-6550

Mechanical Engineering:

Matheson Ball Engineering

Chris Freer

770-751-0773

General Contractor

Haley Construction

386-944-0470



architecture

L

engineering

P

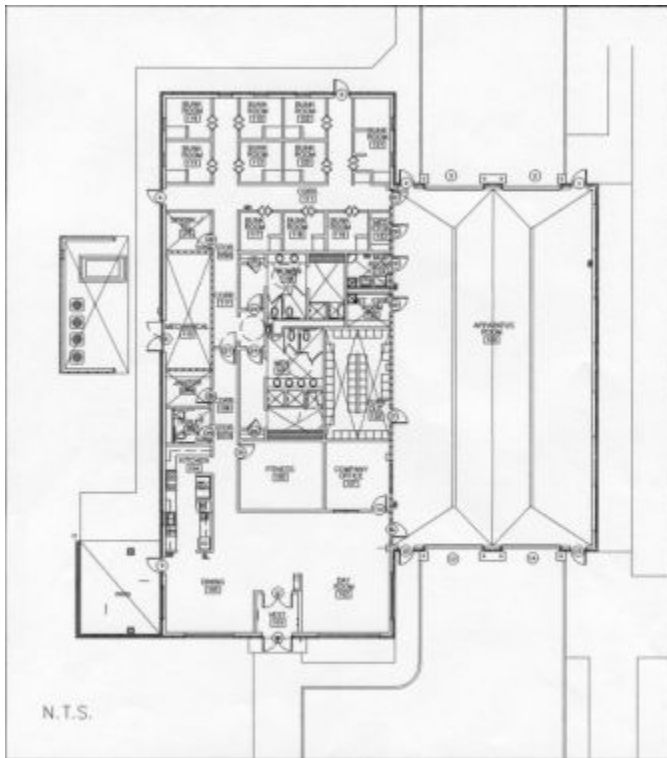
interiors

B

C

FIRE STATION NO. 25

LAWRENCEVILLE, GA



Floor Plan (above) Site Map (below)

