



SUWANEE LIBRARY

Positioned on a 7.5 acre site in the city of Suwanee Georgia, the challenge of this project was to conceive a 20,000 sq. ft. facility that would augment the historic downtown Suwanee main street area and also provide a focus for the new Suwanee Master Plan. The site was also complicated by existing wetlands and bad soils.

The design evolved around the concept of a public meeting place for the community. The main entrance is marked by a plaza area and stairs that create informal meeting spaces. Exterior materials are brick veneer with accent brick details and cast stone medallions that recall historic details of Suwanee in its heyday. Standing seam metal roof and dark storefront framing members also reflect details of the period.

The interior is organized around a central diagonal axis that library functions branch off. The axis has a higher roof which allows for clerestory windows to bring natural light into the interior of the building and is designed to resemble an exterior street with structural columns doubling as street lights and decorative metal trusses reminiscent of old town pavilions. Exterior materials are at signature areas to continue the building theme. The children's story hour incorporates a clock tower as part of the town square and the quiet study is enclosed with brick veneer walls and "antique" doors and windows. Decorative cast iron street lights accent areas throughout.

Patrons can easily circulate the collection areas from the main axis and the information desk is located at the center of the axis for user convenience and also allows library personal to monitor all public areas. Other user convenience items include a coffee counter, express check self check out stations, wireless access and automatic doors. All restroom fixtures are automated including soap and paper towel dispensers.

The lighting system takes advantage of new indirect lighting technology that will provide even illumination without glare. The mechanical systems are a combination of roof top and fan coil units zoned to provide local control of the various function areas of the building. The building is equipped with data/voice cabling systems that will support future technological advances and also incorporates wireless nodes



270 Langley Drive, Lawrenceville, Georgia 30045
770-963-8989 Fax: 770-822-9492

Owner: Gwinnett County B.O.C.
Gross Square Feet: 20,477
Volumes: 79,008
Construction Cost: \$3.1 Million
Cost/SF: \$151.39
Construction Start: August 2003
Construction Time: 12 Months

SUWANEE, GEORGIA

Architect/Engineering/Interior Design

Lindsay ♦ Pope ♦ Brayfield & Assoc., Inc.
Buck Lindsay and Mike Clifford
Greg Brayfield and Gene Gabrell
Vanessa Dugan
770-963-8989

Civil Engineering

McFarland-Dyer & Associates, Inc.
Jeffrey Dyer
770-932-6550

Mechanical Engineering:

Matheson Ball Engineering
Fred Ball
770-751-0773

General Contractor

Hoqan Construction Group, LLC
770-242-8588



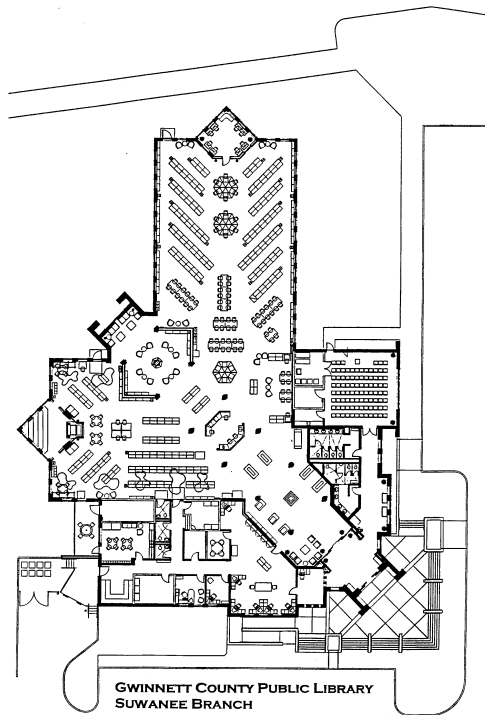
Lindsay ♦ Pope
Brayfield & Assoc.

www.lpbatlanta.com



SUWANEE LIBRARY

Suwanee, Georgia



Floor Plan



**Lindsay • Pope
Brayfield & Assoc.**

270 Langley Drive, Lawrenceville, Georgia 30045
770-963-8989 Fax: 770-822-9492

www.lpbatlanta.com